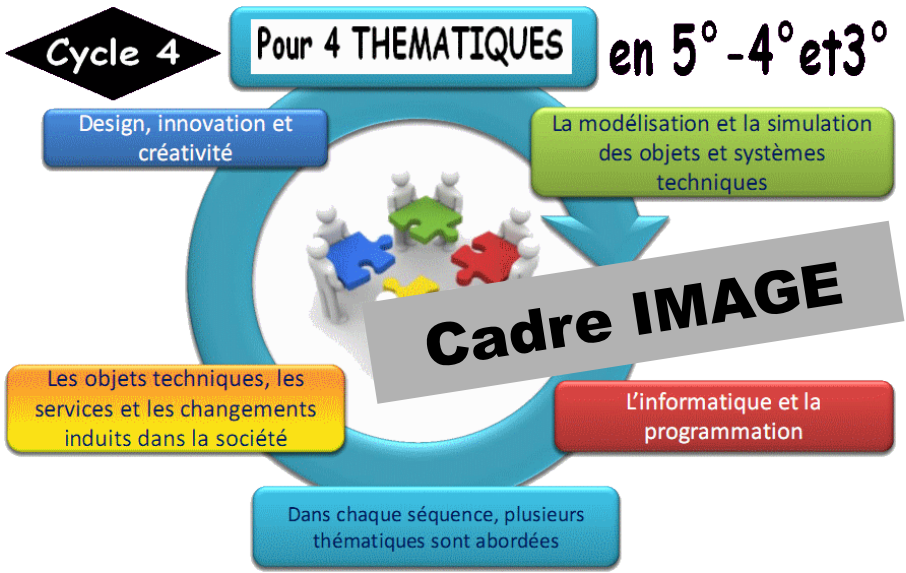


Glg-Onslow



CYCLES 4

Ce classeur appartient à :

NOM : _____
Prénom : _____

Cadre TEXTE



Cycle 4	Thème	Année scolaire	Classe	Professeur
5 ^{ème}	HABITAT & OUVRAGE	20 __ / 20 __	50_	
4 ^{ème}				
3 ^{ème}				

Cadre TABLEAU

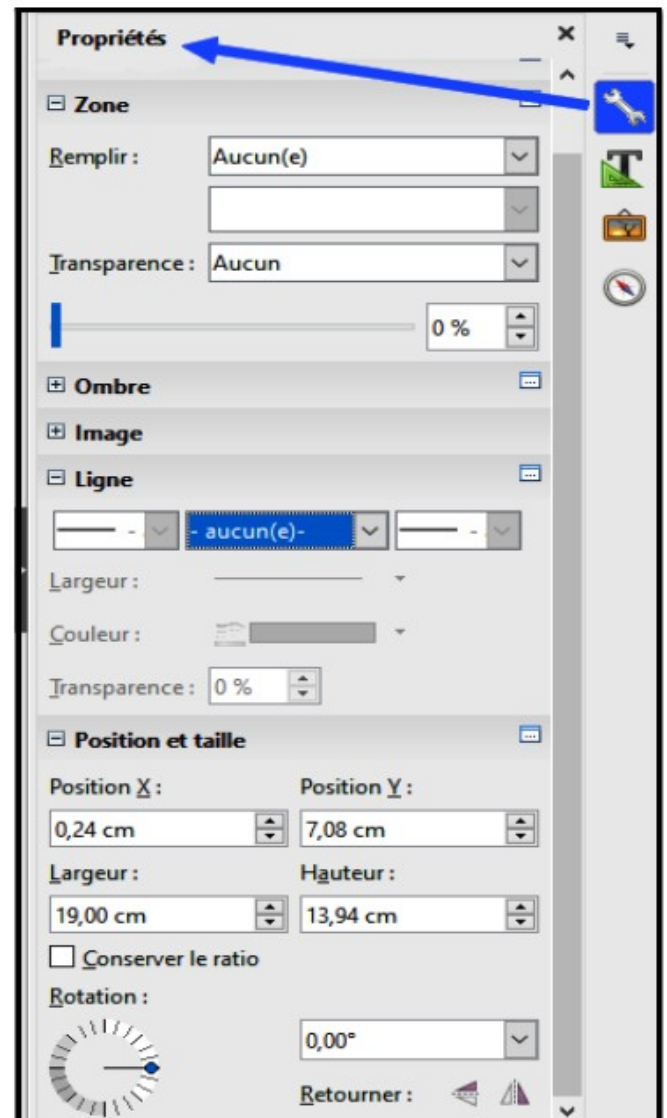
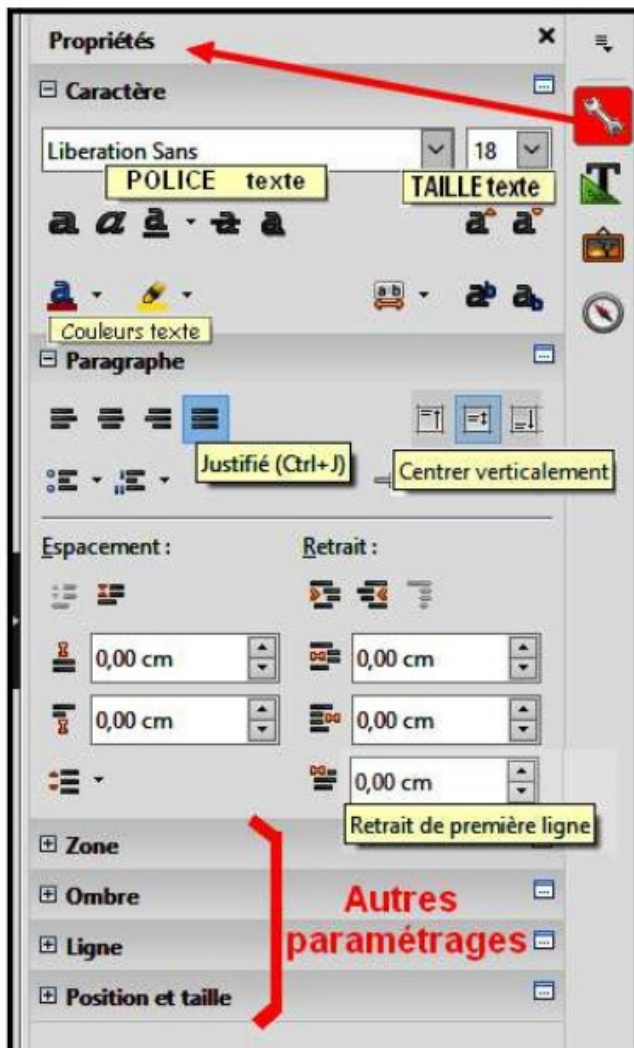


Collège George Onslow -LEZOUX-
Ce classeur est à garder les 3 années du cycle 4...

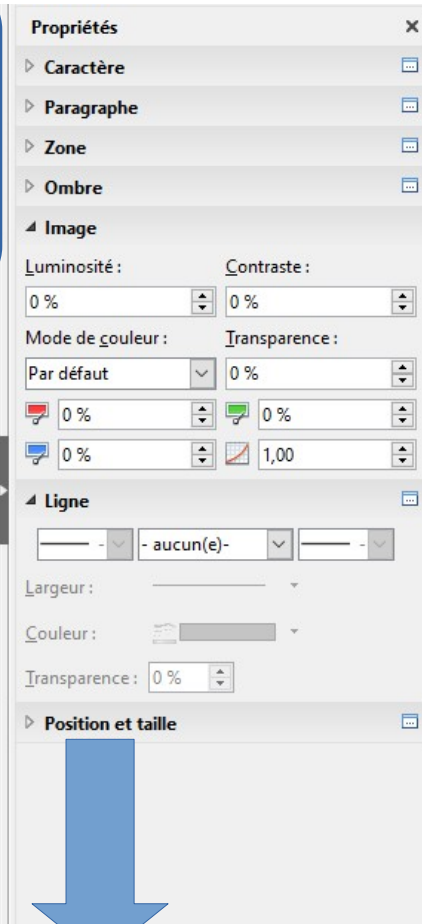


1- Le Paramétrage des cadres TEXTES

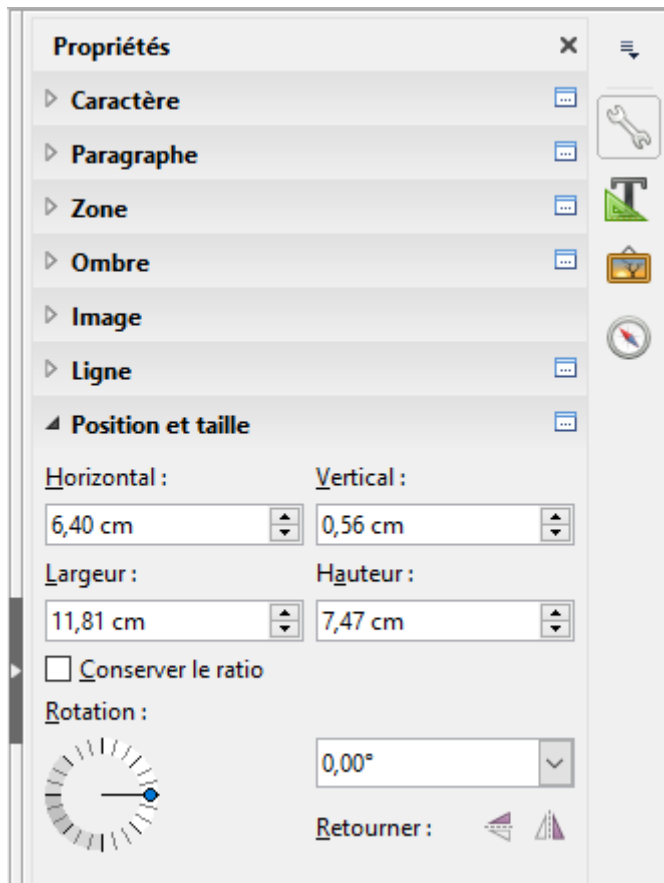
2- Le Paramétrage des cadres IMAGES



Les outils IMAGES



Détail pour cadre textes
Position et taille



Les outils TEXTES

The image shows a software interface for editing a document. On the left, a document page is displayed with a blue box highlighting a text entry form. The form contains the text "Ce classeur appartient à :", "NOM : _____", and "Prénom : _____". Below the form is a table with columns for "Cyclo", "Thème", "Cours", and "Professeur". The table has three rows for cycles 5, 4, and 3. Below the table are illustrations of a car, a drone, and a house. At the bottom, it says "Collège George Onslow -LEZOUX-".

On the right, the "Propriétés" (Properties) panel is open. It has two main sections: "Caractère" (Character) and "Paragraphe" (Paragraph). The "Caractère" section shows the font "Comic Sans MS" and size "14". The "Paragraphe" section shows various alignment and spacing options.

Les outils du CADRE TEXTES

This image shows the same software interface as above, but with the "Propriétés" panel expanded to show the "Zone" (Text Box) and "Position et taille" (Position and Size) sections. The "Zone" section shows "Remplir" (Fill) set to "Aucun(e)" and "Transparence" (Transparency) set to "Aucun". The "Ombre" (Shadow) section has "Activer" (Activate) unchecked. The "Ligne" (Line) section shows "Couleur" (Color) set to "Gris 6" and "Transparence" set to "0%". The "Position et taille" section shows "Horizontal" (Horizontal) at "0,30 cm", "Vertical" (Vertical) at "8,10 cm", "Largeur" (Width) at "10,82 cm", and "Hauteur" (Height) at "4,55 cm". There is a checkbox for "Conserver le ratio" (Keep ratio) which is unchecked, and a "Rotation" (Rotation) field set to "0,00°".

A blue arrow points from the text box in the document to the "Position et taille" section in the properties panel.

**Détail pour cadre textes
Position et taille**